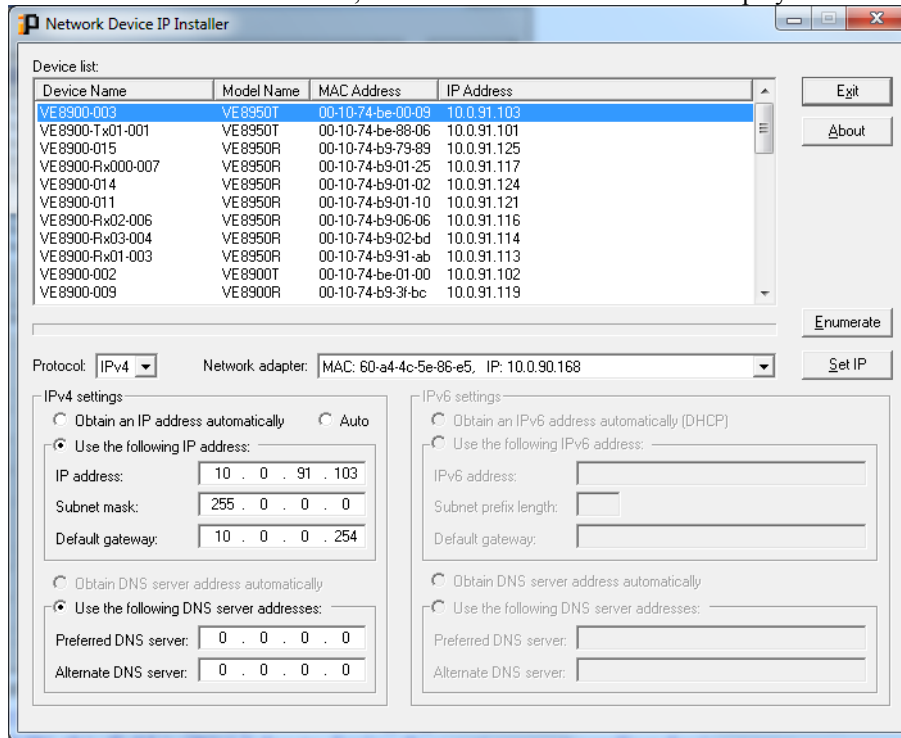


1. Using IP Installer

a). Main window

Execute “**IPInstaller-xxxx.exe**”, the main window below will be displayed.



b). There are 4 column in Device List

Device Name: device name that from device (may support multi-language if the device F/W have such function), for older device F/W, this field is “N/A” due to device does not support sending device name function

Model Name: device model name such as KE6900, SN0116A, etc.

MAC Address: device MAC address

IP Address: current IP address for this device, IPv6 address may displayed if the devices support IPv6 function and newer IP Installer protocol

c). About DNS server and IPv6 support

The DNS and IPv6 setting support are for newer ATEN device F/W only. Those devices support new IP Installer protocol. If the device supports IPv6, the IPv6 setting area will be enabled; otherwise IPv6 setting area will be disabled. If the device supports DNS setting, the DNS setting area will be enabled as well.

d). Network Adapter combo-box

This combo-box is for the PC that had over 1 network adapter. User can choose the network adapter that they want to enumerate from.

e). Enumerate button

Click this button, the utility will send enumerate command and receive reply from device(s), then refresh the Device List.

f). Obtain an IP method

There are two methods to obtain IP in device.

Use dynamic IP: select “Obtain as IP address automatically (DHCP)”

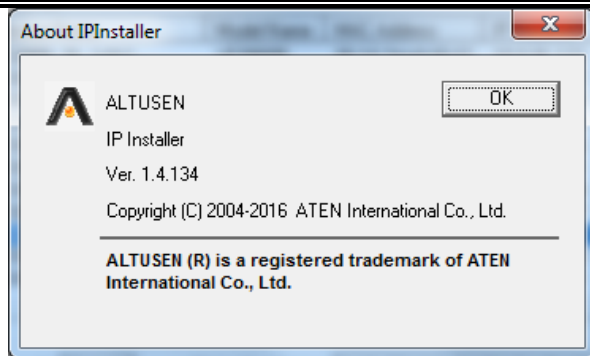
Use static IP: select “Specify an IP address”, and then change IP Address, Subnet Mask, and Gateway

g). Set IP

Select obtaining IP method, change/fill related field, then click “Set IP” button.

The main window will be frozen until IP setting has finished completely.

h). About dialog



Only ALTUSEN version has “About” display function

Limitation:

Due to Windows 2000 or earlier Windows OS don't support IPv6; this utility function will be limited in these OS.

Under Construction:

None